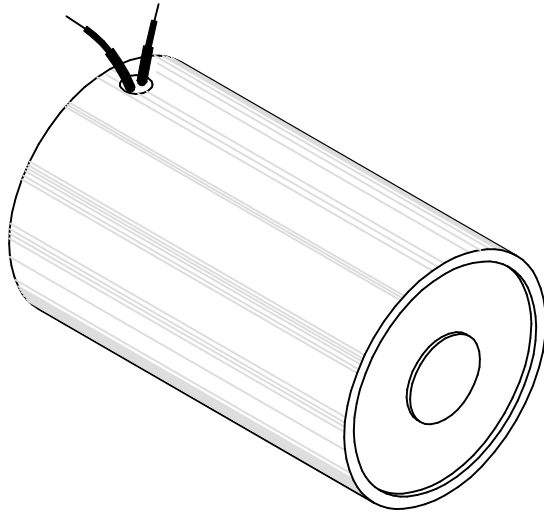


MAGNETIC SENSOR SYSTEMS

Tubular Electromagnet



Series E-28-150

1 1/2" DIA X 2.81"
[38.1 mm X 71.4 mm]

TOTAL WEIGHT: 16.4 OUNCES [465 GR]

duty cycle	1 (100%)	1/2 (50%)	1/4 (25%)	1/10 (10%)
maximum "ON" time, (Sec.)	∞	600	180	60
watts	6	12	24	60
approximate ampere turns	1110	1570	2220	3510

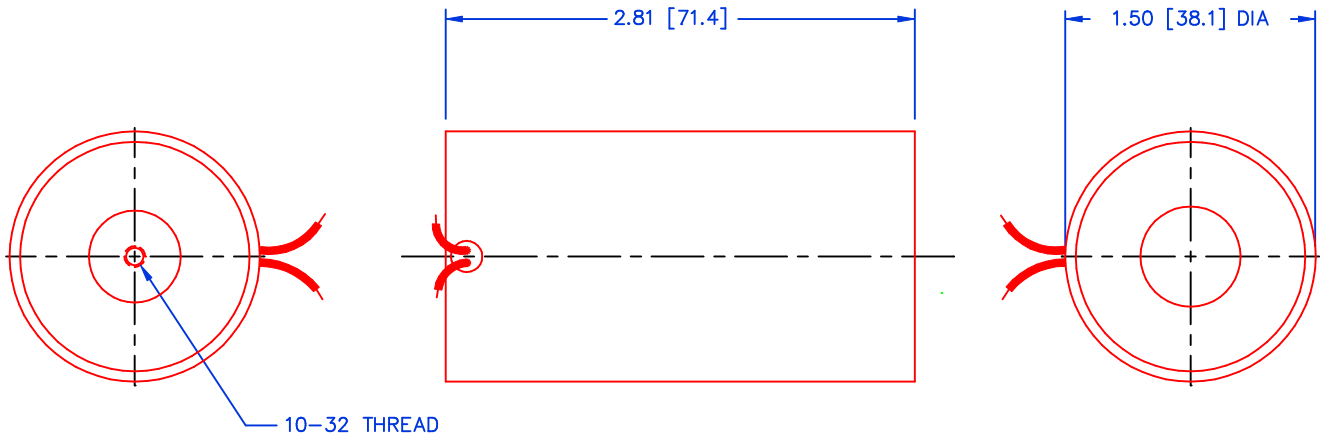
AWG number	resistance (Ω)	volts DC	volts DC	volts DC	volts DC
18	0.6	1.9	2.7	3.8	6.0
19	1.0	2.4	3.5	4.9	7.7
20	1.3	2.8	3.9	5.6	8.8
21	2.6	3.9	5.6	7.9	12.5
22	4.1	5.0	7.0	9.9	15.7
23	6.3	6.1	8.7	12.3	19.4
24	10.1	7.8	11.0	15.6	24.6
25	16.5	9.9	14.1	19.9	31.4
26	27.5	12.8	18.2	25.7	40.6
27	41.5	15.8	22.3	31.6	49.9
28	63.4	19.5	27.6	39.0	61.7
29	104	25.0	35.3	50.0	79.0
30	171	32.0	45.3	64.1	101
31	261	39.6	56.0	79.1	125
32	412	49.7	70.3	99.4	157
33	652	62.5	88.5	125	198
34	1062	79.8	113	160	252
35	1701	101	143	202	320
36	2668	127	179	253	400

HEAT SINK: For proper heat dissipation, body of electromagnet should be mounted on an equivalent of 6.0" x 6.0" x 1/8" metal plate in an unrestricted flow of air.

MAGNETIC SENSOR SYSTEMS

E-28-150

MECHANICAL DIMENSIONS



TOLERANCES: (UNLESS NOTED)

0.XXX: ± 0.005

0.XX : ± 0.010

X/X: $\pm 1/64$

COIL RESISTANCE: $\pm 10\%$

DIMENSIONS IN INCHES [mm]

TYPICAL HOLD FORCE VERSUS INPUT POWER

