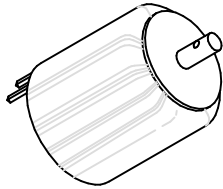


# MAGNETIC SENSOR SYSTEMS

## *Tubular Low Profile Clapper Solenoid*



Series S-08-82  
0.82" DIA X 0.80"

TOTAL WEIGHT: 1.27 OUNCES  
PLUNGER WEIGHT: 0.10 OUNCES  
CAPTIVE PLUNGER

duty cycle	1	1/2	1/4	1/10
maximum "ON" time, (Sec.)	$\infty$	180	50	10
watts	3.5	7	14	35
approximate ampere turns	455	640	910	1440

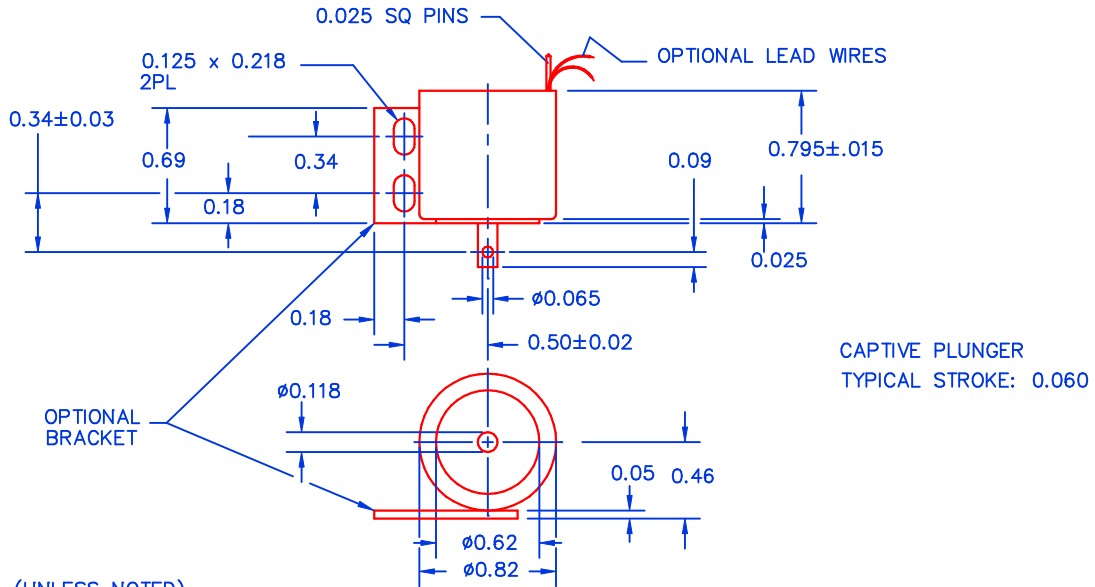
AWG number	resistance	volts DC	volts DC	volts DC	volts DC
25	1.4	2.2	3.1	4.4	7.0
26	2.0	2.7	3.9	5.5	8.7
27	3.3	3.4	4.8	6.8	10.8
28	5.3	4.4	6.2	8.8	13.9
29	8.5	5.4	7.7	10.9	17.2
30	15.9	7.2	10.2	14.5	22.9
31	24.2	9.0	12.7	18.0	28.5
32	36.3	11.0	15.5	22.0	34.7
33	60.8	14.2	20.0	28.3	44.8
34	96.8	18.3	25.9	36.6	57.9
35	153	23.1	32.7	46.2	73.0
36	239	29.3	41.4	58.6	92.6
37	400	36.3	51.4	72.7	115
38	543	44.0	62.2	88.0	139
39	950	58.3	82.4	117	184
40	1525	73.7	104	147	233
41	2139	89.1	126	178	282
42	3620	113	160	227	359

HEAT SINK: For proper heat dissipation, body of solenoid should be mounted on an equivalent of 2.0" x 2.0" x 1/8" aluminum plate in an unrestricted flow of air.

# MAGNETIC SENSOR SYSTEMS

S-08-82

## MECHANICAL DIMENSIONS



TOLERANCES: (UNLESS NOTED)

.XXX: ±.005

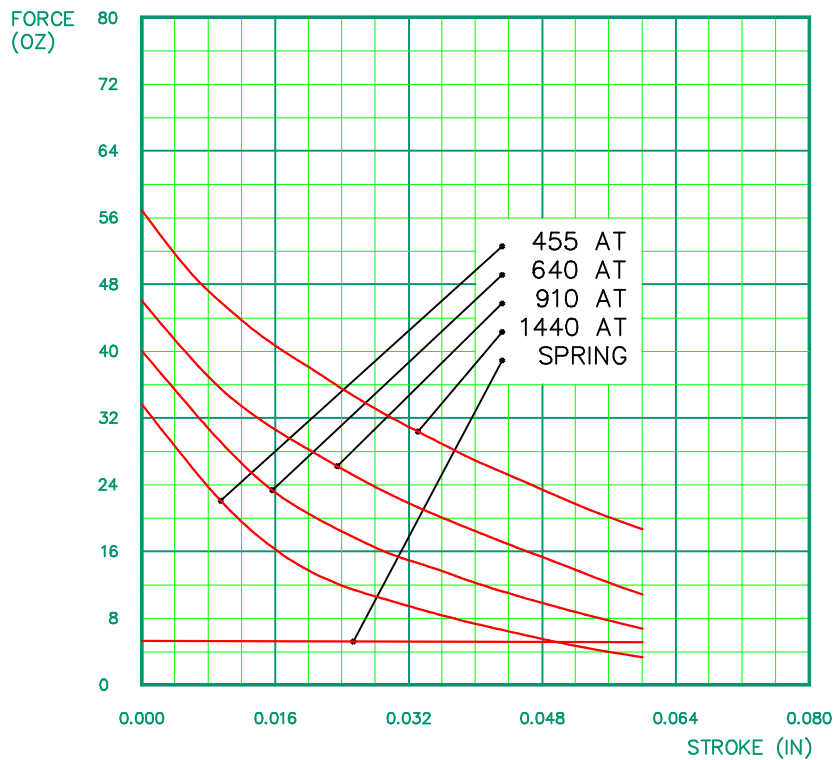
.XX : ±.010

X/X: ± 1/64

COIL RESISTANCE: ±10%

SOLENOID SHOWN ENERGIZED

## TYPICAL PULL FORCE VERSUS STROKE



These force curves do not account for return spring.

The typical return spring force is 5.1/ 5.2 OZ as shown.