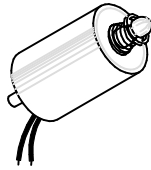


MAGNETIC SENSOR SYSTEMS

Push Type Tubular Solenoid



Series S-63-38-H
0.38" DIA X 0.66"

TOTAL WEIGHT: 0.23 OUNCES
 PLUNGER WEIGHT: 0.03 OUNCES
 CAPTIVE PLUNGER

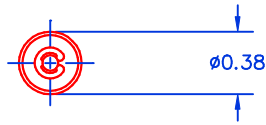
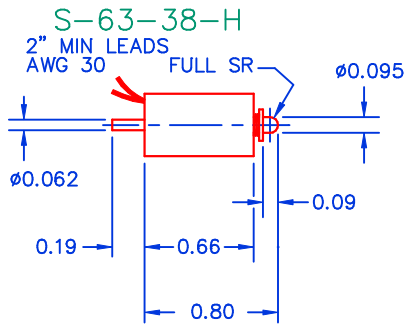
duty cycle	1	1/2	1/4	1/10
maximum "ON" time, (Sec.)	∞	25	6	0.5
watts	2	4	8	20
approximate ampere turns	205	290	410	650

AWG number	resistance	volts DC	volts DC	volts DC	volts DC
27	0.39	0.9	1.3	1.8	2.8
28	0.52	1.1	1.5	2.1	3.4
29	0.69	1.2	1.7	2.5	3.9
30	1.43	1.6	2.3	3.3	5.2
31	1.93	2.0	2.9	4.1	6.4
32	3.20	2.5	3.6	5.0	8.0
33	5.28	3.3	4.6	6.6	10.4
34	7.43	3.9	5.5	7.8	12.4
35	12.1	4.8	6.7	9.5	15.1
36	20.8	6.2	8.8	12.4	19.6
37	30.3	7.7	10.8	15.3	24.3
38	47.8	9.5	13.4	19.0	30.1
39	88.9	13.0	18.4	26.0	41.3
40	127	15.8	22.4	31.7	50.2
41	183	19.2	27.2	38.5	61.0
42	281	24.0	33.9	47.9	76.0

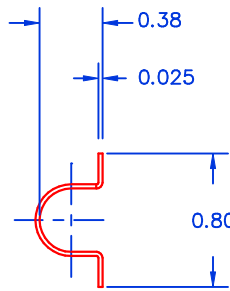
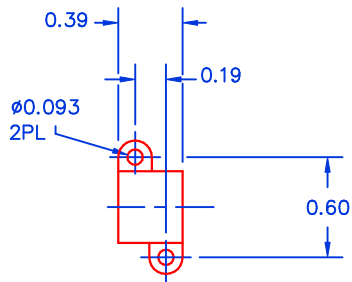
HEAT SINK: For proper heat dissipation, body of solenoid should be mounted on an equivalent of 2.0" x 2.0" x 1/8" aluminum plate in an unrestricted flow of air.

MAGNETIC SENSOR SYSTEMS

MECHANICAL DIMENSIONS



CAPTIVE PLUNGER
 TYPICAL STROKE: 0.090



OPTIONAL BRACKET

TOLERANCES: (UNLESS NOTED)

.XXX: ± 0.005

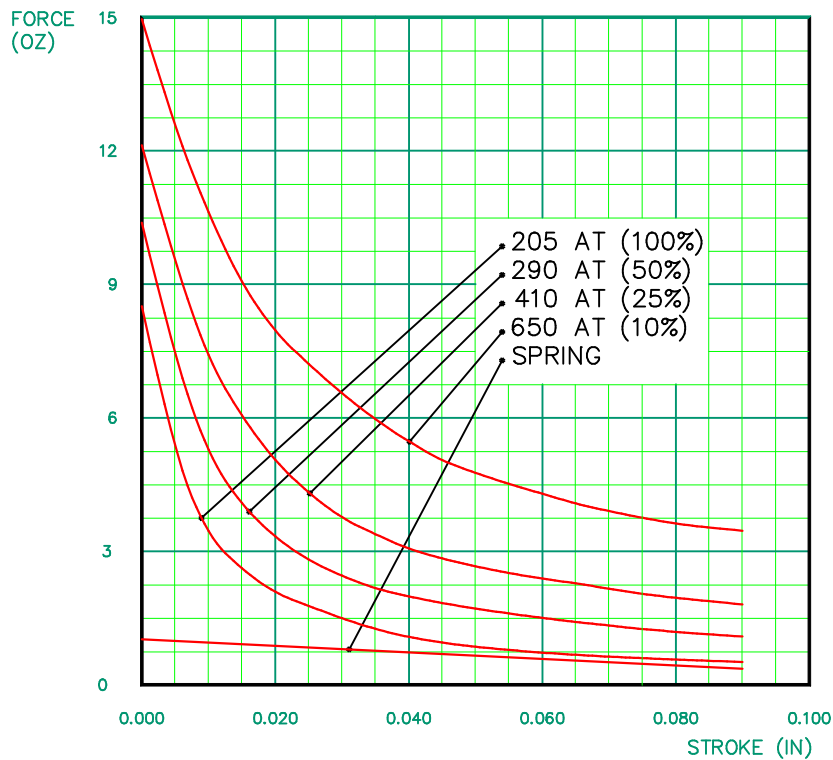
.XX : ± 0.010

X/X: $\pm 1/64$

COIL RESISTANCE: $\pm 10\%$

SOLENOID SHOWN ENERGIZED

TYPICAL PUSH FORCE VERSUS STROKE



These force curves do not account for return spring.

The typical return spring force is 0.4/1.0 OZ as shown.